

2016 General Statement of Qualifications



○ ○
Bramhall Engineering and
Surveying Company
801 Moore Road
Avon, Ohio 44011
440-934-7878 Telephone
440-934-7879 Fax

Bramhall Engineering & Surveying Company (BRAMHALL), established in 1996, is licensed to provide both Professional Engineering & Surveying services. BRAMHALL combines a wide range of project experience and the working knowledge of our seasoned professionals with state-of-the-art technology to provide comprehensive Professional Services for our clients. Our understanding of the Construction Phase enables us to eliminate potential problems during the preliminary design process and that has routinely resulted in fewer construction delays and reduced expenditures for our clients.

BRAMHALL is proud of our staff of over thirty-two (32) employees including eight (8) Civil Engineers of which seven (7) are Professional Engineers and four (4) Professional Surveyors. BRAMHALL is thoroughly knowledgeable in EPA's NPDES Phase II BMP Requirements with five (5) CPESC Professionals and two (2) CESSWI Inspectors. We combine our knowledge and experience with a common sense approach to problem solving. BRAMHALL has consistently demonstrated to our clients a steadfast commitment to providing high quality design and inspection services with a focused attention to detail.

BRAMHALL is ODOT prequalified for Complex Roadway Design, Non-Complex Roadway Design, Bicycle Facilities and Enhancement Design, Limited and Complex Right-Of-Way Plan Development and Level I Bridge Design and Construction Management.

BRAMHALL has developed more than 200 local Municipal Improvement Plan sets that have been successfully constructed throughout Northeast Ohio at a value in excess of \$150,000,000.

BRAMHALL has served as Consulting City Engineer for the following Communities:

- **The City of Avon1997 to 2010**
- **The City of Amherstsince 2003**
- **The City of Vermilion 2006 to 2009**
- **The City of Avon Lakesince 2006**
- **The Village of Sheffield....2004 to 2007**
- **The City of Sheffield Lake....since 2012**

Contact Information

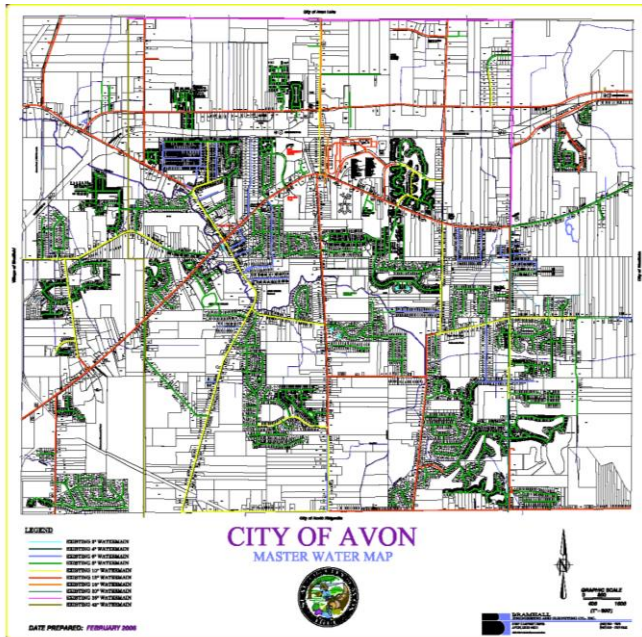
○ ○
Michael C. Bramhall, P.E., P.S., CPESC
President
440-343-4225 Cell
mbramhall@bramhall-engineering.com

○ ○
Christopher L. Howard, P.E., CPESC
Vice President, Partner
440-343-6197 Cell
choward@bramhall-engineering.com

○ ○
Clarence D. Watkins, P.E., CPESC
Engineering Manager
440-343-6695 Cell
cwatkins@bramhall-engineering.com

○ ○
Valerie L. Kilmer, P.E.
Project Manager
440-336-3482 Cell
vkilmer@bramhall-engineering.com

Municipal Engineering Services



BRAMHALL has provided a broad range of Professional Engineering and Surveying services to a number of local communities including:

- City of Avon, 1997 – 2010
- City of Avon Lake, 2006 – Present
- City of Amherst, 2003 – Present
- Village of Sheffield, 2004 – 2007
- City of Vermilion, 2006 – 2009
- City of Sheffield Lake – 2012

As the community Consulting Engineer we have provided several types of Professional Services including, but not limited to, the following:

- Construction Plans, Specifications, Bid Documents, Bidding Assistance for Infrastructure projects including roadways, storm sewers, sanitary sewers and pump stations, waterlines and booster pump stations, and stormwater pollution prevention plan preparation
- Geographical Information Systems (GIS) Development and Infrastructure Mapping
- Ohio Public Works Commission (OPWC) applications, coordination and documentation
- Community Development Block Grant (CDBG) applications, coordination and documentation
- FEMA LOMR, LOMR-F, LOMA and Elevation Certificate Applications and Documents
- Backwater Analysis, Hydraulic and Hydrologic Studies
- Governmental Accounting and Standards Board (GASB34) annual reports and infrastructure database management
- Ohio EPA-MS4 Annual Reports SWP3 Reviews and Site Inspections for NPDES Phase II Compliance
- Planning Commission Reviews for Industrial, Commercial and Residential Developments
- Contract Administration and Construction Inspection and Staking Services for City Projects
- Annual Road Program, Construction Estimates, City wide road condition ratings, Construction Plans and Bidding Documents
- Residential Site Plan Reviews including foundation check and as built check
- Bridge and Culvert Design, Annual ODOT Bridge Inspections
- Review of Cost Estimates for Developer projects within the community
- Development of Storm Water Management Ordinances
- Grant and Funding Applications
- Assessment Project Calculations and Documents
- Park Improvements including restrooms, buildings, access roads, parking lots and pedestrian bridges.
- Development of City Construction Standards, BMP's and Specifications
- Water resource engineering including detention basin design, hydraulic and hydrologic studies
- CPESC SWP3 Preparation and CESSWI Inspections
- Applications and administration for American Recovery and Reinvestment Act (ARRA) projects
- Coastal engineering revetments, seawalls, shore structure permits, submerged land lease documents



Project Spotlight – French Creek Recreation Complex, City of Avon

Site History

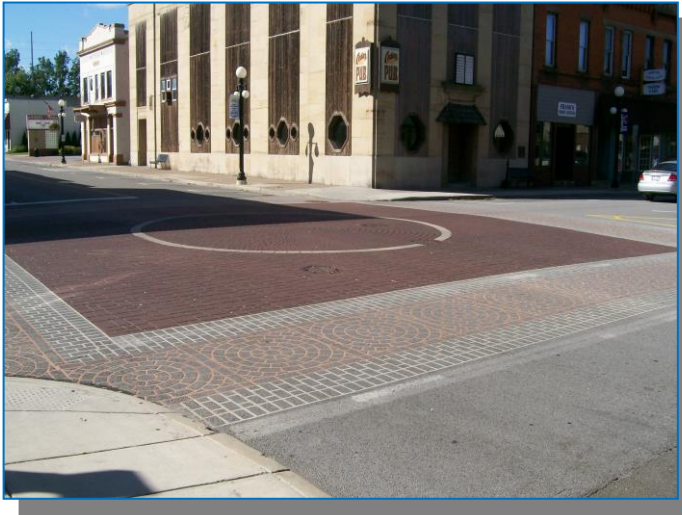
The Project Site has a varied and multi-faceted land use history. In the 1930's the site included portions of an inter-urban trolley rail line. The majority of the site was used predominantly as agricultural land up to the 1950's. In the 1960's portions of the property were used as a borrow site for construction of IR90 / SR2. The site was briefly used as a recreation park up until the early 1970's with a 30 acre and 38 acre lake that were both approximately 25 feet deep. In the 1970's the site began to be used as a storage facility for fly ash (a residual waste material produced in the combustion of coal). The property was purchased from a local utility company by the City of Avon and in 2004 began a creative site redevelopment planning process. The Design Phase for the French Creek Recreation Complex began in 2008. The baseball stadium opened for play 12 months later on June 2, 2009 on schedule and under budget, with a sold-out capacity crowd of over 5,000 in attendance.

Project Description

- A. 5,000 Seat Capacity Independent League Stadium – Cost \$12 Million
 - Started June 2008 and Completed June 2009 Home of the Lake Erie Crushers
- B. YMCA of Greater Cleveland Facility – Cost \$12 Million
 - Started December 2008 to be Completed April of 2010
- C. Infrastructure Improvements – Cost \$8 Million
 - Started May 2008 – Completed July 2009 Including 4,600 LF of Concrete Roadway, 1,500 Parking Space stone and asphalt Parking Lot, Site Lighting, Sanitary Sewer, Waterline, Storm Sewer
- D. Other Major Projects Completed at this site as follows
 - French Creek Bridge Replacement – Cost of \$800,000
 - Traffic Signal Upgrade at SR 611 & Miller Road – Cost of \$175,000

BRAMHALL was responsible for all civil / site engineering, infrastructure design, value engineering, construction administration including continuous critical path construction determination to condense the construction timeline from 16 months to 12 months, private utility company coordination including gas, electric, telephone, and cable, weekly progress meetings, change order review, pay application review, construction staking and construction inspection, OEPA compliance storm water pollution prevention inspections, as-built drawing preparation, coordination of government agency permitting and compliance with Ohio Environmental Agency Division of Solid and Infectious Waste Management, Division of Surface Water, Division of Drinking Water, US Army Corps of Engineers, Ohio Department of Natural Resources, Coordination of Wetland Investigation and Delineation, Coordination of Phase 1 & 2 Environmental Site Assessments, Dedication Plat, Private Utility Easement Preparation, and the continued development and layout of the site for future users.

Roadway Design Projects



BRAMHALL provides complete roadway design services including:

- Private Utility Notification, Coordination and Relocation
- Preparation of Base Map Topography used for development of Survey Baselines, Construction Baselines
- Existing Monument referencing and Preservation
- Right-Of-Way Design including Easement and Legal Descriptions necessary for temporary and permanent property acquisition
- Preliminary and Final Construction Cost Estimates, Bid Quantities
- Construction Plan Preparation including typical sections, plan and profiles, details, specifications, contract documents necessary to procure competitive bids, review and recommendation of bids, complete construction administration from breaking ground to final restoration.

The following is a general listing of recent roadway design projects that we have completed or are currently involved with:

• Avon Lake – Lear and Krebs Road Intersection and Traffic Signal, 2015 OPWC	\$1,400,000
• Village of Grafton – Mechanic Street Improvements, 2015 OPWC	\$1,110,000
• Amherst – Mill Street Improvements, 2012 OPWC	\$2,200,000
• Avon – Chester Road Relocation, LPA, ODOT Safety Funds and OPWC	\$2,659,000
• Avon Lake – Lear and Walker Road Intersection and Traffic Signal, 2012 OPWC	\$1,320,000
• Amherst – Cleveland Street Rehabilitation, 2011 OPWC	\$310,000
• Cleveland - East 78 th Street relocation from Osage Ave to Marble Ave, 2010	\$800,000
• Avon Lake - Walker Road Culvert, 2010 OPWC	\$300,000
• North Ridgeville - Lorain Road Rehabilitation Phase IIIB, 2010 OPWC	\$1,087,000
• Elyria – Abbe Road Rehabilitation and Storm Sewer Project , 2010 OPWC	\$1,600,000
• Elyria - Gulf Road Rehabilitation and Slope Stabilization, 2009 OPWC	\$635,000
• Erie County - Strub Road/SR 4 and Intersection Widening and Traffic Signal, 2009	\$1,850,000
• North Ridgeville - Lorain Road Rehabilitation Phase IIIA, 2009 OPWC	\$1,060,000
• Amherst – Cooper Foster Culvert Rehabilitation, 2009 OPWC	\$160,000
• Avon Lake - Walker Road Widening, 2009 OPWC	\$654,000
• Elyria - West River Road Culvert Rehabilitation, 2009 OPWC	\$98,000
• Amherst - South Lake Street Resurfacing and Culvert Embankment, 2009 OPWC	\$360,000
• Avon - LOR-254 -05.09, 2008 ODOT LPA	\$2,600,000
• Amherst - Kresge Drive and Liberty Bell Drive Rehabilitation, 2008	\$597,000
• Avon - French Creek Recreational Area Infrastructure Package, 2008	\$8,100,000
• North Ridgeville - Lorain Road Rehabilitation Phase II, 2008 OPWC	\$690,000
• Amherst - Leavitt Road/SR58 Turn Lane, 2007	\$445,000
• Lorain County – Mills Road Culvert, 2007 OPWC	\$300,000
• North Ridgeville - Mills Industrial Park, OPWC, 2006	\$250,000
• Avon – Center Road Extension, OPWC, 2006	\$1,350,000

Sanitary Sewer Collection System Projects

BRAMHALL provides complete design services for municipal, residential, commercial and industrial Sanitary Sewer Systems, including new systems and rehabilitation of existing systems. Detailed evaluations and analysis are performed to ensure that the routing, sizing, material and equipment selection are efficient, cost effective and meet the particular needs of the client. Teaming with Geotechnical, Mechanical and Electrical Professionals and coordination with equipment vendors allows for complete design of Sanitary Pump Stations and Force Mains. Pump station experience includes submersible and self-priming pumps. We routinely review sanitary sewer video inspections to determine the best method for rehabilitation i.e. lining, grouting or replacement, infrastructure evaluation, asset management and Capital Improvement Plan Development.



The following is a general listing of recent Sanitary Sewer Collection System Projects that we have completed or are currently involved with:

• Sheffield Lake – Sanitary Sewer Force Main, 2016	TBD
• Amherst – NE Sanitary Sewer Rehabilitation, 2013	\$300,000
• Amherst – Crocker Street Sanitary Sewer, 2012	\$100,000
• Amherst – Cleveland Avenue and Harris Road Sanitary Sewer, 2011	\$200,000
• Amherst – Terra Lane Sanitary Sewer Replacement, 2010	\$ 75,000
• Avon – Nagel Road Sanitary Pump Station, 2010	\$610,000
• Avon – Nagel Interchange Sanitary Sewer, 2010	\$2,200,000
• Amherst – Cooper Foster Park Sanitary Sewer Reline, 2010	\$350,000
• Amherst – Siphon Chamber Modifications and Overflow Elimination, 2010	\$650,000
• Vermilion – Elberta Beach Sanitary Sewer Rehabilitation, 2010	\$800,000
• Vermilion – Vermilion on the Lake Sanitary Sewer Relining and Rehabilitation, 2009	\$1,500,000
• Avon – French Creek Recreational Area 10” Sanitary Sewer, 2008	\$250,000
• Amherst – Forest Hill Sanitary Sewer Improvements, 2008	\$500,000
• Amherst – Elyria Avenue Sanitary Sewer Improvements , 2007	\$647,000
• Amherst – Cooper Foster Park Road, 15” Sanitary Sewer Improvements, 2007	\$86,000
• Amherst – Church Street 8” Sanitary Sewer Replacement, 2006	\$108,000
• Amherst – Crosse Sanitary Sewer Improvements, 2006	\$650,000
• Avon – Jaycox Road Sanitary Sewer, 2005	\$2,300,000
• Avon – Jaycox Road Sanitary Pump Station, 2005	\$515,000

Waterline Distribution System Projects



Bramhall Engineering & Surveying Company provides complete services for municipal, residential, commercial and industrial water distribution systems including:

- Preliminary Planning and Engineering
- Water Line Modeling
- Construction Plans and Specifications
- Pump Selection and Pump Station Design
- EPA Permitting and Coordination
- Planning for Intercommunity Connections for Improved redundancy
- Infrastructure Evaluation, Asset Management and Capital Improvement Plan Development

The following is a general listing of recent Waterline Distribution System Projects that we have completed or are currently involved with:

- | | |
|--|-------------|
| • Avon Lake – Lear and Krebs Road, PRV Relocation, 2014/2015 | \$200,000 |
| • North Ridgeville – Root Road Waterline Replacement, 2014 | \$450,000 |
| • North Ridgeville – Denise Street Waterline Replacement, 2013 | \$560,000 |
| • Amherst – Spring, Tenney, South Main and Beaver Court Waterline, 2012/2013 | \$220,000 |
| • Amherst – Crocker Street Waterline Replacement, 2012 | \$100,000 |
| • Avon – 16” Waterline Extension, Nagel Road, 2012 | \$400,000 |
| • Sheffield Schools – Waterline Replacement, Harris Road, 2011-2012 | \$180,000 |
| • Amherst – Idlewood Drive 8” Waterline Extension, 2011 | \$77,000 |
| • Avon Lake/Avon I-90 Nagel Road 36” Waterline Relocation, 2011 | \$410,000 |
| • Avon – Nagel/Chester/Just Imagine, 16” Waterline Extension/Replacement, 2011 | \$900,000 |
| • Avon – I-90/Avon Road/Just Imagine Drive 16” Waterline Connection, 2010 | \$315,000 |
| • Avon – Case Road 12” Waterline Extension, 2009 | \$51,000 |
| • North Ridgeville – Lorain Road 12” / 36” Waterline Interconnection and Pressure Reducing Valve, 2009 | \$105,000 |
| • Vermilion – Liberty Ave. Waterline Extension and Connection to Lorain, 2009 | \$110,000 |
| • Avon Lake –Nagel Road 36” Waterline Relocation, 2009 | \$300,000 |
| • Avon – French Creek Recreational Area 12” Waterline, 2008 | \$300,000 |
| • Vermilion – Downtown Waterline Replacement, 2008 | \$650,000 |
| • Avon – Jaycox Road 12” Waterline Extension, 2007 | \$280,000 |
| • Sheffield – Colorado Ave. 12” Waterline Relocation, OPWC, 2006 | \$300,000 |
| • Avon – Church St./Eaton Dr./Center Rd. Waterline Replacement, 2006 | \$430,000 |
| • Amherst – West Ridge Road Booster Pump Station, 2005 | \$174,000 |
| • Avon – Center Road Booster Pump Station and 16” Waterline Feeder, 2003 | \$1,000,000 |

Residential Development Projects



BRAMHALL provides complete design services for residential design projects from initial topographic and boundary surveys to preliminary plan preparation for Planning Commission Approval through preparation of the final construction documents and Subdivision plats.

BRAMHALL also provides residential site plans, construction staking and as-built (final grade) surveys to meet local requirements.

The following is a general listing of recent residential development projects that we have completed or are currently involved with:

- Avon – West Wickham
- Sheffield Village – Waterford Phase No. 3
- Sheffield Village – Preserve at French Creek
- Westlake – Bur Oak Phase I and II
- Grafton – Waterford Crossings Subdivision, Phases I and II
- Lorain - Harborwalk on the Black River Subdivision, Phases I, II and III
- LaGrange – Grey Hawk Golf Club at Durham Ridge Subdivision, Phases I, II and III
- Sheffield - Berkshire Meadows Subdivision
- North Ridgeville – Meadow Lakes Subdivision, Phases VI, VII, VIII, IX, X, XI and XII
- Aurora - Tara at Barrington Estates Condominium Development
- Tallmadge – Villas at Chapel Hill Condominium Development
- Tallmadge – Crossings at Northwest Condominium Development
- Kent – Crossings at Golden Pond Condominium Development
- Kent – Inn at Golden Pond Assisted Living Development
- Streetsboro – Fairways at Boulder Creek Condominium Development
- Wellington – Windemere at Wellington Commons Subdivision
- Grafton – Fiddler’s Green Subdivision Phase I and II
- Grafton – Fox Run Subdivision, Phase II
- Various Municipality House Topo Reviews
- Various Municipality House Foundation and Setback Verification
- Various Municipality House Final Grade Verification

Civil / Site Commercial and Industrial Development Projects



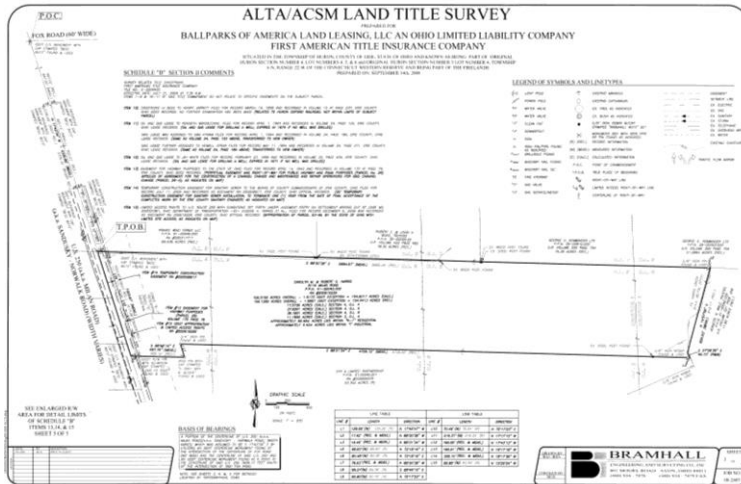
BRAMHALL provides complete Civil / Site Design Services for Municipal, Commercial and Industrial Development Projects including:

- Boundary and Topographic Surveys
- Master Plan Preparation
- Stormwater Management and Drainage Design
- Utility Interconnection
- Pavement Design
- Earth Retaining Wall Design
- Erosion and Sediment Control Plans

The following is a general listing of recent civil / site development projects that we have completed or are currently involved with:

- Drive Time Dealership, Sheffield Village, 2016
- Beck Oil Service Station, Oakwood Village, 2016
- Ohio Metallurgical Expansion – Elyria, 2015/2016
- Ganley Honda, North Olmsted, 2015
- O’Brien Auto Dealership, Vermilion Township, 2015
- Jimmy John’s Restaurant – Elyria, 2015
- Maroon Building Expansion – Avon, 2015
- Agrinomix Building Expansion – Oberlin, 2015
- Rose Congregate Care – Avon, 2014
- Residence Inn – Avon, 2014
- Salvation Army Family Retail Store – Avon, 2012
- Elyria LCCC – University Center Ridge Campus, 2011
- Joyce Buick Dealership, Avon, 2011
- Firment Chevrolet Dealership, Avon, 2011
- O’Brien Auto Dealership, Medina Township, 2011/2012
- Brunswick – Liberty Ford Parking Lot Expansion, 2011
- Cleveland – W130th Railcar Unloading Facility, 2010
- Cleveland – Presrite Corp., East 78th Street
- Lorain - Lorain Port Authority, Lorain Diked Disposal Site, 2009
- Lorain – Lorain City Schools, Irving Elementary School, 2009
- Westlake – Nordson Corporate Office, 2009
- Sheffield Twp. – National Bronze Foundry Addition, 2009
- Lorain – Lorain Lighthouse Methodist Church, 2009
- Avon – Avon Post Office, 2009
- Eaton Twp. – Thomas Aquinas Learning Center at Holy Love, 2009
- Camden Twp. – Green Circle Growers Furnace Building, 2008
- Montville Twp. – Ganley Nissan Dealership, 2008
- Avon – Avon Police Station, 2008
- Avon Lake – Avon Lake Animal Clinic, 2007
- Perkins Twp. – Northern Ohio Medical Services Site, 2006
- Avon – Avon Fire Station, 2006
- Amherst – Spitzer Volkswagen Dealership, 2005
- Lorain – Lorain City Schools, Masson Elementary and Homewood Elementary School, 2005
- Sheffield – Spitzer Dodge – Spitzer Mitsubishi Dealership, 2004

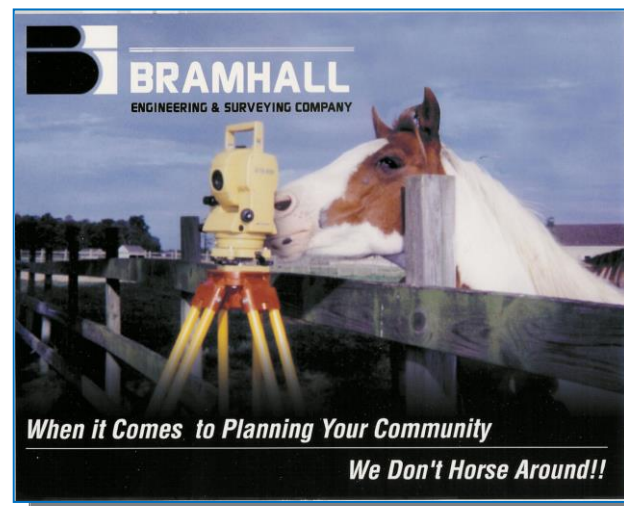
Professional Land Surveying Services



BRAMHALL has three (3) full time field crews that are equipped with State-of-the-Art field equipment including traditional Topcon EDM's, Topcon Robotic EDM, and Topcon GR3 GPS/GLONASS system. We collect information using TDS Ranger Part II Survey Pro Max and a Trimble TSC2 with Trimble Access. These devices allow a seamless transition from the field to office with the generation of AutoCAD linework and point creation. Field data is analyzed, imported and utilized with a variety of software including AutoCAD Civil 3D 2016, Microstation V8i Series II with Geopak, Carlson Survey 2009 and Trimble Terramodel 10.60. We use this software to create professional and accurate drawings, calculations and models to meet the needs of our clients and the requirement of local and state agencies.

Surveying Services

- Property Line and Boundary Surveys
- Subdivision Plats
- Dedication Plats
- Vacation Plats
- Condominium Plats
- Annexation Maps
- Rezoning Maps
- Lot Split Plats
- Lot Consolidation Plats
- Topographic and Hydrographic Surveys
- ALTA/ACSM Land Title Surveys
- Mortgage Location Surveys
- Construction Staking
- Machine Control Cards
- Right -Of -Way Plans (ODOT Pre-qualified)
- Easements
- Legal Descriptions
- Deed and Document Record Research
- Earth volume and cut / fill calculations
- As-built Plan Preparation
- Surface Modeling and Data Creation



Construction Services



Construction Staking

BRAMHALL has provided construction staking services for Heavy Highway Contractors and the Building Trades Industry for nineteen years. We utilize a vast array of surveying equipment from steel tapes TO GPS/GLONASS devices in order to provide our clients with accurate information to achieve proper positioning. BRAMHALL is also capable of providing clients with digital machine control data and digital point data for automated equipment. We have performed staking for many high profile jobs and have developed a reputation for a fast, efficient, and safe response.

Ohio EPA Stormwater Program Compliance

To meet ODOT and EPA NPDES Phase II requirements BRAMHALL provides Storm Water Pollution Prevention Plan (SWP3) and Site Inspections. SWP3 Plans are prepared by Certified Professional in Erosion and Sediment Control (CPESC) and all SWP3 Site Inspections are performed by CPESC or Certified Erosion Sediment and Storm Water Inspectors (CESSWI).

The following is a general listing of recent construction staking that we have completed or are currently involved with:

- Rose Congregate Living Facility – Phase I, construction staking, column line layout, roadway, parking and utilities, Avon, 2014, 2015
- Cabela's, column line layout, staking of drives, parking and utilities, provide machine control, Avon 2015
- Speedway #9712, construction staking and control survey, Cleveland, 2015
- State Route 57-LOR-57-9.09 – construction staking for 1.25 miles of roadway improvements, set Right-of-Way monumentation, Grafton, 2014, 2015
- Lorain High School, construction staking and control survey, 2013, 2014, 2015
- University Center Ridge Campus, column line layout, 2011
- Firment/Joyce Dealership, data creation, foundation staking and column line layout, 2011
- LAK –SR2, control survey, machine card development, SWP3 Plan Preparation, MOT Phase Modification, 2010, 2011
- Berea – Berea City Schools Building and Site Construction Staking, 2009
- LOR –SR57, 2008, control survey, machine card development, final monumentation, SWP3 Plan Preparation, SWP3 Inspection
- LAK- SR2, 2008, control survey, machine card development, final monumentation, SWP3 Plan Preparation, SWP3 Inspection

Construction Inspection Services



BRAMHALL has provided Construction Administration and Construction Inspection Services to municipal clients and private clients for over twenty years. Inspection Services typically include construction monitoring for quality control, daily reports, monitoring and documentation of onsite testing, construction quantity calculations, pay request review and recommendations, schedule review and coordination, punchlist and project closeout.

The following is a general listing of infrastructure projects that we have provided Construction Administration and Construction Inspection Services:

- Vermilion – Vermilion River Pump Station Replacement and Forcemain Improvements, 2015/2016
- Amherst – ODOT LPA Safe Routes To School, 2015
- Village of Grafton – Mechanic Street Improvements, 2015
- Lorain County Engineer – Abbe Road Widening, ODOT LPA Construction Administration and Construction Inspection, 2013-2014
- Amherst – Mill Street Improvements, 2013
- Amherst – NE Sanitary Sewer Rehabilitation, 2013
- Village of Sheffield – ODOT LPA Safe Routes To School, 2012 – 2013
- Lorain County Engineer – Station Road Phase 2, ODOT LPA Construction Administration and Construction Inspection, 2012
- Lorain County Engineer – Station Road Phase 1, ODOT LPA Construction Administration and Construction Inspection, 2011
- Elyria – Overbrook and Pinewood Lift Station Improvements, 2011-2012
- Elyria – Westside Waterline Improvements, 2011
- Elyria – Brooklyn Street Improvements, 2011
- Vermilion - Fisherman's Bend Condominium, Inspection for retaining wall and parking lot improvements, 2011
- Lorain County Engineer – Station Road, ODOT LPA Construction Administration and Construction Inspection, 2011
- Avon Lake – Avondale/Moore Rd. Watermain Replacement, 2009
- Amherst – Quarry Lakes, Subdivision Inspection, 2009
- Avon – Palmer Village, Subdivision Inspection, 2009
- Avon – LOR-254-05.09, ODOT LPA Construction Administration and Construction Inspection, 2009
- Vermilion – Vermilion on the Lake Sanitary Sewer Rehabilitation, 2009
- Vermilion – Downtown Watermain Replacement, 2008
- Avon – Stonebridge Creek, Subdivision Inspection, 2008
- Avon – S.R. 83 Ditch Enclosure, 2300 LF of 12' x 6' box culvert, 2003 to 2006
- Avon Lake – Curtis Rd., Lake Rd., Electric Blvd. Sanitary Sewer Rehabilitation, 2008
- Avon Lake – Fay/Vineyard Ave. Sanitary Sewer Rehabilitation, 2008
- Avon Lake – Beachdale Ave. Watermain Replacement, 2008
- Avon Lake – Woodstock Ave. Waterline Replacement, 2008

Stormwater Management/Floodplain Studies



BRAMHALL provides complete Stormwater Management Reports and Floodplain Studies including:

- Sizing of detention ponds or retention basins and outlet structures.
- FEMA Permit Applications including LOMR and CLOMR.
- Hydrologic and Hydraulic Studies.
- Stormwater Pollution Prevention Plan (SWP3).
- SWP3 Inspections.
- Utilization of HydroCAD, EPA SWMM, 5.0 ODOT CDSS, HECRAS

The following is a general listing of recent Stormwater Management/Floodplain Studies that we have completed or are currently involved with:

- Tuscarawas River – Flood Study and BFE Determination, 2016
- Baker Creek – Flood Study and BFE Determination, 2016
- Coleman Ditch – Flood Study and BFE Determination, Keystone School District, 2013
- Tinkers Creek Tributary – FEMA Map Revision, Solon, Nestle Plant Expansion, 2013
- Powder Maker Ditch – FEMA Map Revision, Avon Lake, 2011/2012
- Faulkner Ditch Backwater Analysis and Flood Study, North Ridgeville, 2011
- Robinson Ditch Backwater Analysis and Flood Study, North Ridgeville, 2011
- Amherst Interceptor Storm Sewer, 2012
- French Creek – Stoney Ridge to S.R. 83, Stormwater Modeling Utilizing SWMM, Avon, 2012/2013
- Schwartz Creek – Nagel Road relief sewer/regional stormwater basin modeling – utilizing SWMM, Avon, 2012/2013
- Mills Creek Drainage Study – Detention Feasibility Analysis, North Ridgeville, 2012/2013
- City of Avon Industrial SWP3 Development –Utilities Department, Street Department, Parks and Recreation Department, Police Department, and Fire Department
- City of Sheffield Lake Industrial SWP3 Development –Utilities Department, Street Department, Police Department, and Fire Department
- City of Amherst Industrial SWP3 Development –Utilities Department, Street Department, Community Park and Pool

Civil/Site Educational Development Projects



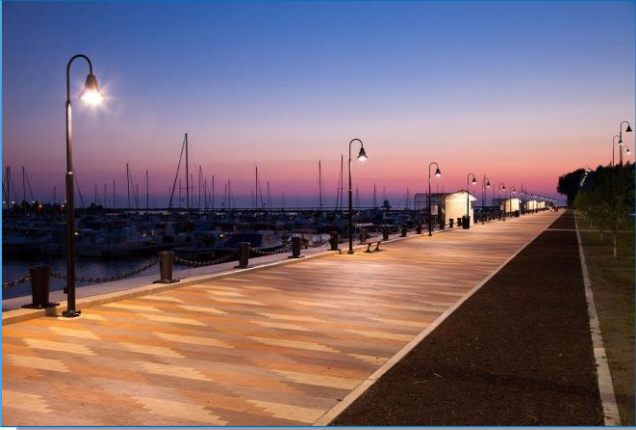
BRAMHALL provides complete Civil/Site Engineering for Educational Development Projects:

- Site Surveys including Boundary Surveys and Topographic Surveys.
- Grading Plans.
- Stormwater Management Facilities including: retention basins, detention basins, underground detention.
- Utility Interconnection.
- Parking lots, access drives.
- Erosion Control Plans (SWP3)
- LEED Points

The following is a general listing of recent Civil/Site Educational Development Projects that we have completed or are currently involved with:

- Sheffield/Sheffield Lake Schools – WWTP Upgrade 2014
- Avon Middle School, Avon City Schools, 2013
- Vermilion Middle School, Vermilion City Schools, 2013
- University Center Ridge Campus, Lorain County Community College – 2011
- Brookside High School, Sheffield – Sheffield Lake Schools, 2011/2012
- Keystone Middle School, Keystone Local Schools, 2010/2011
- Irving Elementary School, Lorain City Schools, 2009
- Lincoln Elementary School, Lorain City Schools, 2008
- Masson Elementary School, Lorain City Schools, 2005
- Homewood Elementary School, Lorain City Schools, 2005
- Longfellow Middle School, Lorain City Schools, 2003
- Washington Middle School, Lorain City Schools, 2003
- Three Elementary Schools, Midview Local Schools, 2002
- Firelands High School Track Improvements, Firelands Local School, 2000

Transportation Services



BRAMHALL offers a comprehensive array of transportation related services for state and federally funded public improvements. Our extensive experience in projects of this type provides assurance to our clients that their project will comply with all state and federal requirements from the preliminary engineering phase through to construction.

Our clients include Local Municipalities, County Engineers, and Port Authorities, as well as the State of Ohio.

The following is a general listing of transportation related services that we have the capability to perform:

- Funding sources and applications – our team can provide guidance into suitable sources of funds that could be utilized for the preliminary engineering, detailed design, R/W acquisition, and construction phases. We also provide assistance in preparing and submitting funding applications.
- Scope of Services preparation – because a thorough, well developed scope is the roadmap to successful delivery of a project, our team performs a comprehensive review of applicable state and federal requirements, and ensures they are included as part of the scope document. This minimizes the chances for substantial design “reversals” during project development, which cost both time and money to address.
- Preliminary Engineering – when multiple alternatives appear to solve the problem to be addressed, we review and evaluate each alternative to a reasonable, sufficient level of detail to facilitate an informed selection of the alternative to be implemented. This includes reviewing impacts to environmentally sensitive areas, utilities, private property, access management, cost to implement, and rate of return.
- Public Involvement – preparation of exhibits and coordination with members of the public to explain the alternatives being considered, as well as receive feedback. Our team can articulately explain the ideas under consideration in non-engineering language, so the public can comprehend the pros and cons to each alternative.
- Public Agency deliverables – In addition to construction plans and bid documents, there are many other components that are required prior to advertising a project for sale. Our team has extensive experience in these items, including: Design Exception identification and preparation; utility coordination and preparation of the Utility Note; identification and resolution of encroachments, including preparation of revocable use permits; completion of the R/W Certification for signature by the public agency; completion and submission of the NOI to OEPA; and Railroad Coordination.

Professional Services References

- **Ken Carney, P.E., P.S., Lorain County Engineer, (440) 329-5586**
- **Robert Klaiber, P.E., P.S., Lorain County Engineer's Office, (440) 329-5586**
- **William Holtzman, P.E., Lorain County Engineer's Office, (440) 329-5590**
- **Mayor Mark Costilow, City of Amherst, (440) 988-4380**
- **Ken Kaczay, Administrator, Sheffield Village, (440) 949-6209**
- **Tim Ujvari, P.E., P.S. City Engineer, City of Elyria, (440) 326-1444**
- **John Schneider, P.E., Assistant City Engineer, City of Elyria, (440) 326-1444**
- **Mayor Bryan Jensen, City of Avon, (440) 937-7803**
- **Joe Reitz, Public Works Director, City of Avon Lake, (440) 930-4101**
- **Dale Vandersommen, P.E., Engineering Department, City of Lorain, (440) 204-2003**
- **Jack Meyers, P.E., Erie County Sanitary Engineer, (419) 433-7303**
- **Tim King, Erie Regional Planning Commission, (419) 627-7524**
- **Tim Lloyd, P.E., Senior Project Manager, Erie County Engineer's Office, (419) 627-7712**
- **Matthew Rogers, P.E., Project Engineer, Erie County Engineer's Office, (419) 627-7711**
- **Scott Wangler, P.E., City Engineer, North Ridgeville, (440) 353-0811**
- **Steve Shepherd, ODOT District 6, (740) 833-8248**
- **Pat Pijor, Construction Project Manager, ODOT District 3, (419) 207-2875**



Michael C. Bramhall, P.E., P.S., CPESC
President

Mr. Bramhall has over twenty years of experience in Civil Engineering and Land Surveying. He has served as Lead Design Engineer on many public infrastructure projects and Project Engineer and Field Engineer on several large-scale design/build projects throughout the United States. Mr. Bramhall is Founder and President of Bramhall Engineering & Surveying Company and oversees all major business activities for the firm. Mr. Bramhall has a Bachelor of Science in Civil Engineering from the University of Cincinnati and has taken classes pursuing a Masters in Water Resources at Cleveland State University. He is a Professional Engineer registered in the State of Ohio (No. 61797) and a Professional Surveyor registered in the State of Ohio (No. 8073). Mr. Bramhall also is a Certified Professional in Erosion and Sediment Control (CPESC). Mr. Bramhall currently serves as City Engineer to the City of Avon Lake and Sheffield Lake, Ohio.

Project Experience

- City of North Ridgeville...French Creek/Mill Creek Regional Stormwater Detention Flood Study
- City of Avon...French Creek Recreational Complex, Site Design, Project Manager
- City of Avon Consulting City Engineer 1997–2009 (During City’s rapid growth phase)
- City of Amherst Consulting City Engineer 2000–2006 (Firm remains Consulting Engineer to present)
- City of Avon, FEMA Floodway/Floodplain Study, Project Engineer
- City of Avon, French Creek Regional Water Quality/Flood Control Detention Basin, Project Manager
- City of Avon, GIS Database Program Development, Project Manager
- City of North Ridgeville, GIS Data Base Program Manager, Project Manager
- City of Avon, SR 254 / Nagel Road Intersection Improvements, Project Manager
- City of Avon, SR 254 / SR 611 Intersection Improvements, Project Manager
- City of Avon, Jaycox Road Sanitary Sewer Trunk Main and Pump Station, 2007, Project Manager
- City of Avon, Avon Commerce Park, 2008, Project Manager
- City of Avon, Schneider Court Reconstruction, 2005, Project Manager
- City of Avon, Nagel, Willo, Jenne Storm Sewer Project, 2009 Project Manager
- City of Avon, SR 83 Box Culvert and Ditch Enclosure 2003- 2006 Project Manager
- Tony March Jaguar / Volvo Dealership, City of Brooklyn, Project Manager
- City of Lorain, Colorado Industrial Park, Project Engineer
- Kerr-McGee Boron Expansion, Henderson, Nevada, Project Field Engineer
- Ocean Spray Cranberries \$45 mm Design/Build, Henderson, Nevada, Field Engineer
- W.R. Grace, Ambrosia Chocolate \$105 mm Design/Build, Milwaukee, Wisconsin, Field Engineer



Christopher L. Howard, P.E., CPESC
Vice President, Partner

Mr. Howard has over twenty years of experience in Civil Engineering, primarily involving highway, residential, commercial and drainage improvements. Mr. Howard serves as the Project Manager on both public and private development projects. He is especially knowledgeable in the design of primary and secondary roadways, residential, commercial and industrial construction projects. Mr. Howard has a Bachelor of Science in Civil Engineering from Michigan State University (1992). He is a Professional Engineer registered in the State of Ohio (No. 61829, 1997), and is a Certified Professional in Erosion and Sediment Control (CPESC, 2009). Mr. Howard served as City Engineer to the City of Vermilion (2006 to 2009) and the Village of Sheffield (2004 to 2007). Mr. Howard's responsibilities included review of all residential, commercial and industrial development plans within the municipalities and was also responsible for overseeing numerous infrastructure projects.

Project Experience

- City of Vermilion...2015 Vermilion River Pump Station Replacement and Forcemain Improvements, Construction Manager
- Village of Grafton...2015 Mechanic Street Improvements, Construction and Project Manager
- City of Heritage Co-op Fueling Facility...2013 City of Kenton, Project Manager
- Harris Road Storm and Waterline Extension...2012-2013, Village of Sheffield, Project Manager
- City of Lorain...2013 Clinton Avenue Drainage Study, Project Manager
- Village of Grafton...2011 Concrete Road Program, Project Manager
- Keystone School District...2011 New 58,000 S.F. Middle School, Village of LaGrange, Project Manager
- Sheffield/Sheffield Lake School District...2011 New 150,000 S.F. High School, Village of Sheffield, Project Manager
- City of Berea...2010 Karl Drive Improvements, Project Manager
- City of Vermilion, 2009 VOL Sanitary Sewer Rehabilitation, OPWC, Project Manager
- City of Vermilion...2009 Edson Street Rehabilitation and Assessment, Project Manager
- City of Vermilion, 2009 Gilbert & Dorothy Rehabilitation, CDBG, Project Manager
- City of Vermilion...2008 Downtown Watermain Replacement, Project Manager
- City of Vermilion...2008 East Liberty Sanitary Sewer, Phase 2 Improvements, Project Manager
- City of Vermilion...2008 East Liberty Watermain Extension, Project Manager
- City of Vermilion...2009 East Liberty Watermain Extension and Connection with the City of Lorain, Project Manager
- City of Vermilion...2008 Edgewater Drive Storm Sewer Improvements and Assessment, Project Manager
- Village of Sheffield...2005 Colorado Avenue Watermain Replacement, OPWC, Project Manager
- Village of Sheffield...2007 Jungbluth Ditch Flood Study, Project Manager
- Grey Hawk Golf Club at Durham Ridge Subdivision, Village of LaGrange, Ohio...272 Lot Subdivision, Project Manager
- Harborwalk on the Black River, City of Lorain...327 Lot Subdivision, Project Manager



Clarence D. Watkins, P.E., CPESC
Engineering Manager

Mr. Watkins has over thirty-six years of experience in the design and management of Civil / Site Engineering and Structural Engineering projects. Mr. Watkins has served as Design Engineer, Project Engineer, Project Manager and Construction Manager on public works, industrial and private projects. Mr. Watkins currently serves as Engineering Manager providing supervision, coordination and management on all engineering projects at Bramhall Engineering and Surveying Company. Mr. Watkins has a Bachelor of Science in Civil Engineering from Cleveland State University (1977) and a Master of Science in Civil Engineering, Cleveland State University (1992). He is a Professional Engineer registered in the State of Ohio (No. 46956, 1982) and is a Certified Professional in Erosion and Sediment Control (2009). Mr. Watkins currently serves as City Engineer for the City of Amherst, Ohio.

Project Experience

- Oldcastle...2015 Plant Expansion, Project Manager
- Lake Ridge Academy...2015 Science and Engineering Building, Project Manager
- Sheffield Schools...2014 WWTP Expansion, Project Manager
- Avon Schools...2013 Avon Middle School, Project Manager
- Vermilion Schools...2013 Vermilion Elementary School, Project Manager
- City of Cleveland...2010 East 78th Reconstruction, Project Manager
- Lorain City Schools...2010 Irving Elementary School Site Design, Project Manager
- City of Elyria...2009 W. River Rd. Culvert Rehabilitation, OPWC, Project Manager
- City of Elyria2009 Gulf Rd. Rehab & Slope Stabilization, OPWC, Project Manager
- City of Amherst...2009 S. Lake St. Recon. & Culvert Rehab, OPWC, Project Manager
- Lorain Port Authority...2009 Lorain Diked Disposal Site, ODOT LPA, Project Manager
- Nordson Corporate Office... 2009, Westlake, Project Manager
- Erie County...2009 Strub Road / SR4 Intersection Improvements, Project Manager
- City of Avon Lake...2009 Walker Road 3rd Lane Widening, Project Manager
- National Bronze... 2009 Bronze Foundry, Sheffield Twp., Site Design, Project Manager, Structural Engineer
- Eaton Twp. – Thomas Aquinas Learning Center at Holy Love Ministries, 2008, Project Manager
- Northern Ohio Medical Services (NOMS), 2008 Site Design in Perkins Twp, Project Manager
- City of Amherst...2008 Forest Hill Sanitary Sewer, Project Manager
- City of Amherst...2008 Kresge Drive Roadway Rehabilitation, Project Manager
- City of Avon Lake...2008 Moore Road Storm Sewer, Project Manager
- City of Amherst...2007 Elyria Avenue Sanitary Sewer, Project Manager
- City of Amherst...2007 Cooper Foster Road Culvert Rehabilitation, Project Manager
- City of Amherst...2007 South Main Street Reconstruction, Project Manager.
- City of Amherst...2006 SR 58 Turn Lane, Project Manager
- Equity Trust Office... 2006, Elyria, Site Design, Project Manager
- City of Amherst...2005 West Ridge Road Booster Pump Station Upgrade, Project Manager
- City of Amherst...2005 Church Street Rehabilitation, Project Manager
- Spitzer Volkswagen Dealership...2004, Amherst, Site Design, Structural Design, Project Manager
- Spitzer Dodge/Spitzer Mitsubishi Dealership, Sheffield, 2004, Project Manager
- Quaker Steak & Lube Restaurant, Sheffield, 2004, Site Design, Structural Design, Project Manager



Valerie L. Kilmer, P.E.
Project Manager

Ms. Kilmer has seventeen years of experience in the design, construction, and project management of highway and roadway improvement plans. Her background encompasses interstate third-lane widening projects, new highway construction on new alignment, and highway and intersection widening and realignments. Ms. Kilmer has experience in both the private and public sectors. Ms. Kilmer has a Bachelor of Science in Civil Engineering from Rensselaer Polytechnic Institute, Troy, New York.

In her several years as Production Administrator for ODOT District 3, Ms. Kilmer led her department in delivering between \$80 million to \$130 million dollars in construction projects each fiscal year. This included survey, design, R/W, utility relocations, value engineering, coordination with the construction department on constructability issues, cost estimating, and the bidding process up through contract award. She was also extensively involved in review and oversight of the District's local let project scopes and plans, including review and approval authority for design standards, design exceptions, and federal funding eligibility of various work items.

Project Experience

- ODOT District 3 – Production Administrator responsible for ensuring between 60-100 projects awarded for construction each fiscal year, while providing support on all other projects in the planning and construction stages. These projects included third lane widenings on I-71 and associated interchange reconstructions; U.S. 30 relocations through Crawford, Richland, and Wayne Counties; several railroad grade separations; safety funded projects; numerous maintenance projects; the CSX National Gateway; and the new privately and locally funded interchange on I-90 at Nagel Road in the City of Avon.
- LOR-82-8.03 – Project Manager for widening the intersection of S.R. 82 and S.R. 252 to install exclusive left turn lanes on all four approaches.
- ERI-4-9.78 – Project Manager for widening 0.9 miles of S.R. 4 from north of Wade Boulevard to Perkins Avenue to install a center two way left turn only lane. Included incorporating a new storm sewer system for the Erie County Engineer's office to alleviate recurring flooding in the area.
- WAY-71-0.28 – Project Engineer for replacing existing 4 lanes of pavement and adding a 3rd lane in each direction on I-71 in Wayne County.
- ERI-250-8.763 – Project Engineer for the widening of U.S. 250 to 5 lanes from just south of Mason Road to Bogart Road for a two way left turn only lane.
- WAY-30-11.86 – Design Engineer for a corridor planning study to determine a preferred alignment for a new four-lane divided highway through Wayne County.
- Ohio Turnpike Third Lane Widening – Design Engineer for replacing existing 4 lanes of pavement and adding a 3rd lane in each direction on the Ohio Turnpike from west of the I-90/S.R. 2 split to the S.R. 57 interchange in Lorain County.



**Aaron P. Appell, P. E., CPESC, CMS4S, Public Notary
Project Manager**

Mr. Appell has seventeen years of experience in field surveying, construction layout, roadway design and project engineering for various project types, including widening and resurfacing, local bridge projects, and enhancement projects. As one of BRAMHALL's lead project managers in our municipal services division, Mr. Appell has participated in numerous public improvement projects in urban locations. Mr. Appell's background allows him to contribute innovative, cost-effective solutions to project design challenges, which has benefited many of our clients who are retrofitting proposed improvements within existing site constraints in urban areas. His diverse experience in urban settings allows him to make informed compromises to fulfill the intent of the project, while minimizing the impact to surrounding properties. He also has a strong background in navigating through municipal governments, as well as being mindful of the impacts of a project on existing zoning laws. Mr. Appell has a Bachelor of Civil Engineering from Cleveland State University, Fenn College of Engineering, (2002). He is a Professional Engineer registered in the State of Ohio (No. 75683, 2011), a Certified Professional in Erosion and Sediment Control (No. 5494, 2009) and a Certified Municipal Separate Storm Sewer System Specialist (No. 187, 2012).

Project Experience

- City of Amherst: Various Storm and Sanitary Flood Mitigation Projects 2005-2014: Prepare SWMM models, review sewer video investigations, prepare construction plans, administer bidding and construction in excess of \$12,500,000 (Constructed) with over \$8,000,000 in future planned projects including the preliminary work for the creation of a Storm Water Utility.
- Mill Street Infrastructure Improvements: City of Amherst....Design Engineer, for Replacement of Sanitary Sewer, Watermain, Storm Sewer, Pre & Post Construction BMP's, Pavement Rehabilitation. Construction management and processing pay requests costs exceeding \$2,300,000.
- Right-of-Way Plan Development: City of Avon ...Right-of-Way designer for roadway widening on Detroit Road S.R. 254 – S.R. 611 to S.R. 83. (LOR254-05.09) PID 76037.
- 2003 – 2014 Roadway Reconstruction for the City of Avon:...Project Engineer, responsible for design, construction management and processing pay requests of total construction costs exceeding \$6,600,000.
- Schneider Court Roadway Reconstruction: City of Avon...Project Engineer, responsible for design, construction management, assessment evaluation, As Built drawings and processing pay requests of approximately \$850,000.
- Detroit/Nagel Road Intersection Improvements: City of Avon...Project Engineer, responsible for design, construction management and processing pay requests of approximately \$450,000.
- Chester/Jaycox Road Intersection Improvements: City of Avon...Project Engineer, responsible for design, construction management and processing pay requests of approximately \$820,000.
- Chester/Moore Road Intersection Improvements: City of Avon...Project Engineer, responsible for design, construction management and processing pay requests of approximately \$600,000.
- Chester & Route 83 Extension Intersection Improvements: City of Avon...Project Engineer, responsible for design, construction management and processing pay requests of approximately \$1,600,000.
- 2004 – 2014 Road Reconstruction Programs for the City of Amherst:...Project Engineer, responsible for design, construction management and processing pay requests of approximately \$8,100,000.
- Jaycox Sanitary Sewer Extension and District Pump Station:...Project Engineer, Sanitary and Storm Sewer Design, SWPPP, processing pay requests of approximately \$2,900,000.
- French Creek Recreation Area Complex:...Project Engineer including design of major utility and infrastructure extension, contract value of approximately \$8,100,000.